

# Fact sheet

## Woloszczuk



### House size

Dimensions	20.08 x 14.45 m
Living area basement	221 m <sup>2</sup>
Living area ground floor	253 m <sup>2</sup>
Living area first floor	216 m <sup>2</sup>
Living area second floor	124 m <sup>2</sup>
Total living area	814 m <sup>2</sup>

### Façade

Mineral render in combination with vertical timber cladding

### Roof

Flat roof

### Heating and ventilation

- Gas boiler
- Photovoltaic panels
- Underfloor heating
- Mechanical Ventilation with Heat Recovery

### Architecture and special features

- Blend of two different architectural styles: Tudor Revival and Neoclassicism
- Fusion of the articulated and the abstract
- Multifaceted home
- Exclusive interiors with bespoke floor plans and lighting design

### Standard specification

- Triple-glazed timber and aluminium windows, fitted in the factory without PU foam
- Holistic health concept with outstanding indoor air quality
- Effective Xund-E electrosmog protection and shielded electrical installations
- Superior-quality, environmentally friendly interiors that are healthy to live in thanks to innovative solutions developed in-house by Baufritz (e.g. interior paints, floor adhesives, etc.)
- HOIZ natural, organic insulation made from wood shavings — developed in-house, certified by natureplus and IBN

Floor plans Woloszczuk

Basement



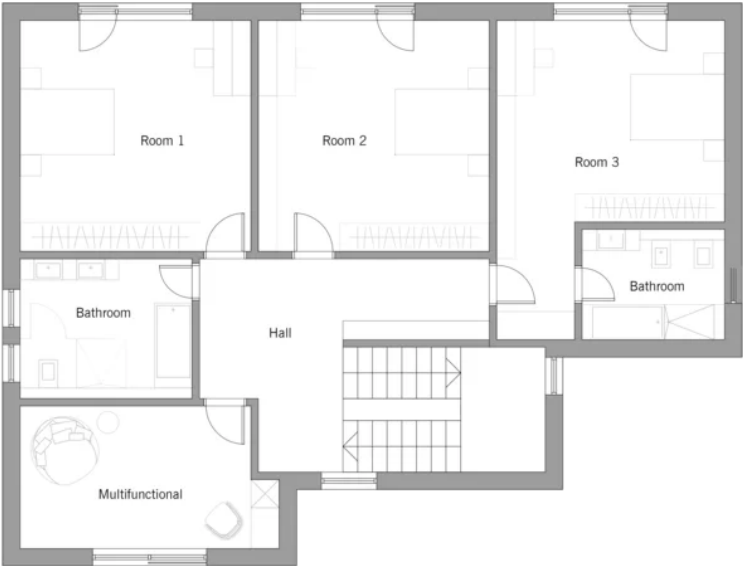
Ground Floor



First Floor



Second Floor



**BAUFRITZ®**