

Fact sheet

Willet



House size

Dimensions	23.37 x 18.50 m
Living area ground floor	264.77 m ²
Living area first floor	166.73 m ²
Total living area	431.5 m ²

Façade

Render

Roof

Hipped roof

Heating and ventilation

- Underfloor heating
- Air source heat pump
- Photovoltaic panels
- Tesla Powerwall storage batteries (3)
- Mechanical ventilation with heat exchange

Architecture and special features

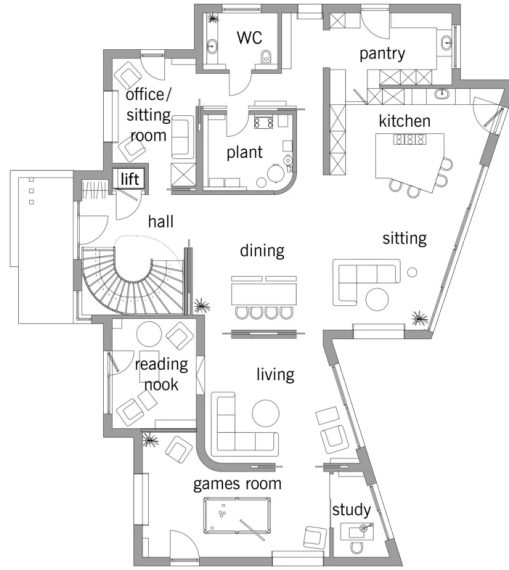
- Mediterranean-inspired contemporary architecture
- Elegant shapes, clean lines and natural hues
- Sweeping timber staircase as a masterpiece of German carpentry
- Sustainability and energy efficiency central to concept
- Articulated volumes at the rear project into the garden at various angles
- Sliding pocket doors to flexibly partition the living space

Standard specification

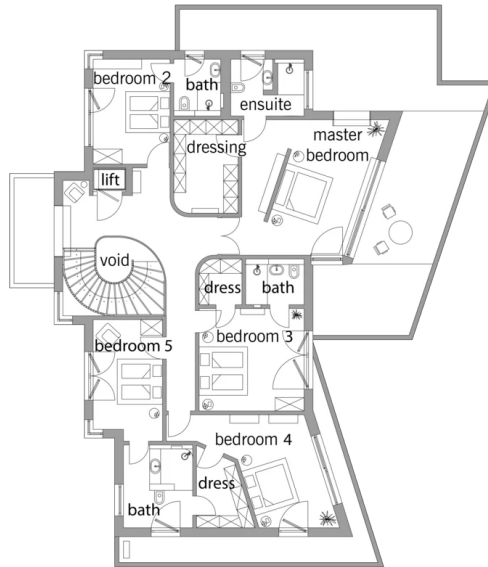
- Triple-glazed timber and aluminium windows, fitted in the factory without PU foam
- Holistic health concept with outstanding indoor air quality
- Effective Xund-E electrosmog protection and shielded electrical installations
- Superior-quality, environmentally friendly interiors that are healthy to live in thanks to innovative solutions developed in-house by Baufritz (e.g. interior paints, floor adhesives, etc.)
- HOIZ natural, organic insulation made from wood shavings — developed in-house, certified by natureplus and IBN

Floor plans Willett

Ground Floor



First Floor



BAUFRITZ®

Baufritz (UK) Limited

Camboro Business Park · The Workplace · Oakington Road, Girton · Cambridge CB3 0QH
Telephone +44 (0) 1223 235632 · E-Mail: enquiries@baufritz.co.uk · Web: www.baufritz.co.uk