

# Fact sheet

## Tawse



### House size

Dimensions	10.08 x 16.33 m
Living area ground floor	139 m <sup>2</sup>
Living area second floor	126 m <sup>2</sup>
Total living area	265 m <sup>2</sup>

### Façade

Mineral render

### Roof

Butterfly roof, Flat roof

### Heating and ventilation

- Underfloor heating
- Gas boiler
- Mechanical ventilation with heat exchange

### Architecture and special features

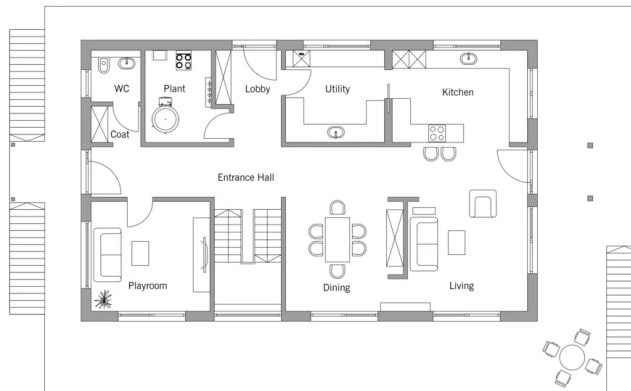
- House built on a steel platform supported by stilts
- Riverside location in a flood zone
- Contemporary design with white mineral render façade
- Windows of varying sizes allow light into the house
- Brises soleil and external shading over the south-facing windows
- Contemporary interiors in beautiful, high-quality materials

### Standard specification

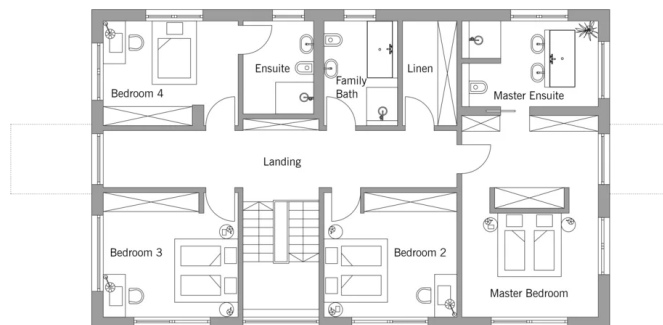
- Triple-glazed timber and aluminium windows, fitted in the factory without PU foam
- Holistic health concept with outstanding indoor air quality
- Effective Xund-E electrosmog protection and shielded electrical installations
- Superior-quality, environmentally friendly interiors that are healthy to live in thanks to innovative solutions developed in-house by Baufritz (e.g. interior paints, floor adhesives, etc.)
- HOIZ natural, organic insulation made from wood shavings — developed in-house, certified by natureplus and IBN

## Floor plans Tawse

Ground Floor



First Floor



# BAUFRITZ®

Baufritz (UK) Limited

Camboro Business Park · The Workplace · Oakington Road, Girton · Cambridge CB3 0QH  
Telephone +44 (0) 1223 235632 · E-Mail: [enquiries@baufritz.co.uk](mailto:enquiries@baufritz.co.uk) · Web: [www.baufritz.co.uk](http://www.baufritz.co.uk)