

# Fact sheet

## Steffen



### House size

Dimensions	12.58 x 9.45 m
Living area basement	102 m <sup>2</sup>
Living area ground floor	100 m <sup>2</sup>
Living area first floor	96 m <sup>2</sup>
Living area second floor	76 m <sup>2</sup>
Total living area	374 m <sup>2</sup>

### Façade

Horizontal timber cladding in combination with natural stone

### Roof

Pitched roof

### Heating and ventilation

- Air source heat pump
- Underfloor heating
- Mechanical ventilation with heat recovery

### Architecture and special features

- Glass façade on the garden side
- Steep pitched roof underscoring architectural language
- Floor to ceiling windows open up rooms to the outside
- 5 bedrooms
- studio for yoga sessions

### Standard specification

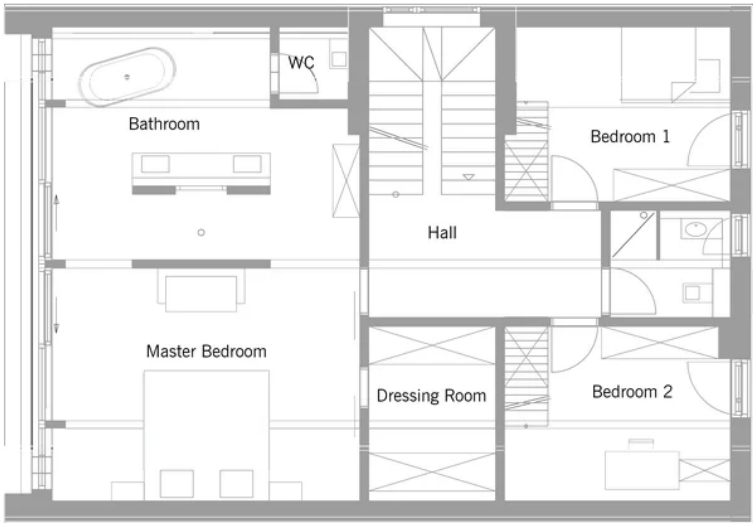
- Triple-glazed timber and aluminium windows, fitted in the factory without PU foam
- Holistic health concept with outstanding indoor air quality
- Effective Xund-E electrosmog protection and shielded electrical installations
- Superior-quality, environmentally friendly interiors that are healthy to live in thanks to innovative solutions developed in-house by Baufritz (e.g. interior paints, floor adhesives, etc.)
- HOIZ natural, organic insulation made from wood shavings — developed in-house, certified by natureplus and IBN

Floor plans Steffen

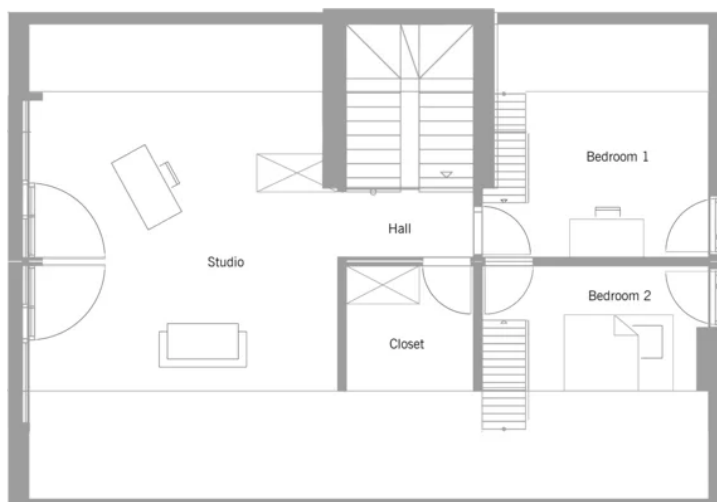
Ground Floor



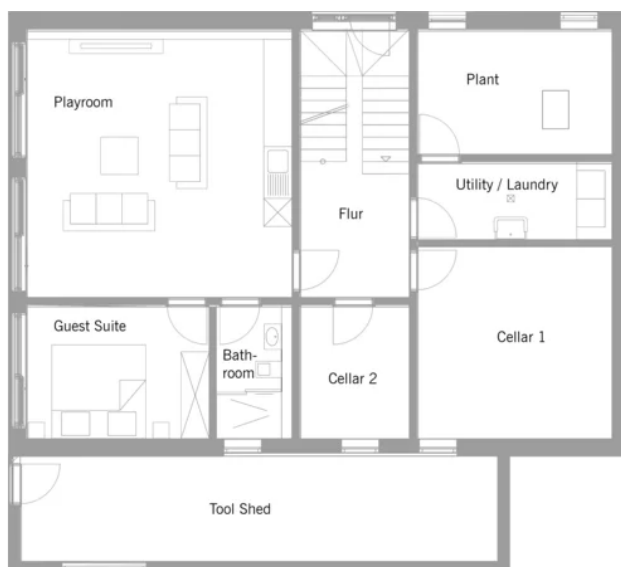
First Floor



Attic



Basement



# BAUFRITZ®

Baufritz (UK) Limited

Camboro Business Park · The Workplace · Oakington Road, Girton · Cambridge CB3 0QH  
Telephone +44 (0) 1223 235632 · E-Mail: [enquiries@baufritz.co.uk](mailto:enquiries@baufritz.co.uk) · Web: [www.baufritz.co.uk](http://www.baufritz.co.uk)

Page 3/3

Updated: 29.01.2026