

Fact sheet

Show house NaturDesign



House size

Dimensions	15.05 x 12.30 m
Living area basement	95 m ²
Living area ground floor	101 m ²
Living area second floor	69 m ²
Total living area	265 m ²

Façade

Treated timber cladding "Rondo" in grey, white mineral render

Roof

Pitched roof

Heating and ventilation

- Rooftop photovoltaic system
- Air source heat pump with buffer storage tank
- Hot water cylinder
- Mechanical Ventilation with Heat Recovery
- Baufritz home automation system

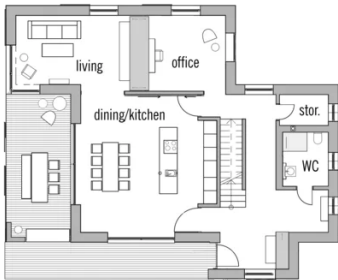
Architecture and special features

- Healthy living concept incl. individual organic lighting design
- Exclusive interiors and premium natural materials
- Electric sliding shutters and louvre windows
- Portable wardrobe and living room wall unit

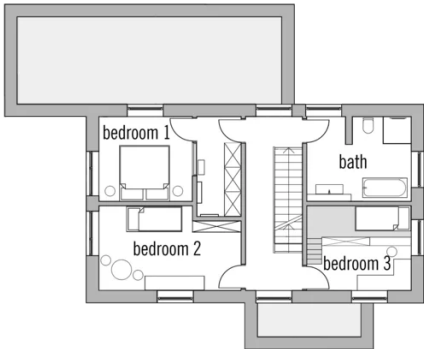
Standard specification

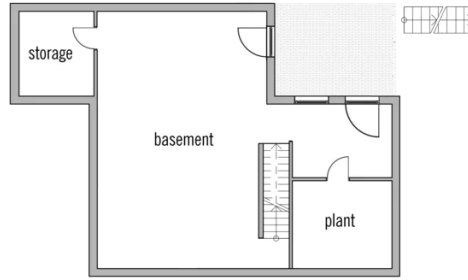
- Triple-glazed timber and aluminium windows, fitted in the factory without PU foam
- Holistic health concept with outstanding indoor air quality
- Effective Xund-E electrosmog protection and shielded electrical installations
- Superior-quality, environmentally friendly interiors that are healthy to live in thanks to innovative solutions developed in-house by Baufritz (e.g. interior paints, floor adhesives, etc.)
- HOIZ natural, organic insulation made from wood shavings — developed in-house, certified by natureplus and IBN

Ground Floor



First Floor





BAUFRITZ®

Baufritz (UK) Limited

Camboro Business Park · The Workplace · Oakington Road, Girton · Cambridge CB3 0QH
Telephone +44 (0) 1223 235632 · E-Mail: enquiries@baufritz.co.uk · Web: www.baufritz.co.uk