

Fact sheet

Show house Haussicht by Alfredo Häberli



House size

Dimensions	25 x 12.13 x 8 m
Living area ground floor	164 m ²
Living area second floor	156 m ²
Total living area	320 m ²

Façade

Vertical timber cladding "Häberli"

Roof

Striking roof composition with innovative rear-ventilated tin roof. Meticulously planned and executed, the roof provides ample space for photovoltaic and solar panels. Curved up soffits create smooth transition from the roof to the upper floor.

Heating and ventilation

- Ground source heat pump
- Photovoltaic and solar panels
- Mechanical ventilation with heat recovery

Architecture and special features

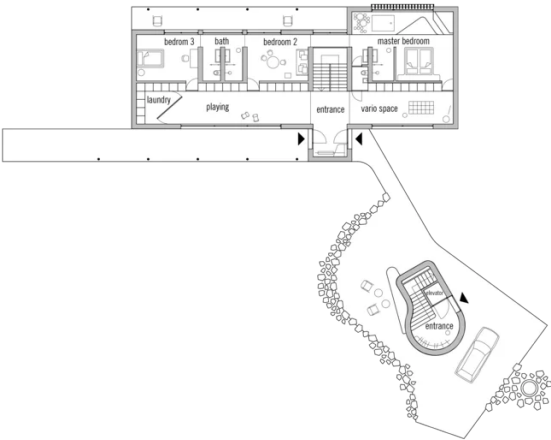
- Show house in Erkheim
- Main house and annex (Stöckli)
- Partnership with designer Alfredo Häberli, Flexible living spaces, Unique design details

Standard specification

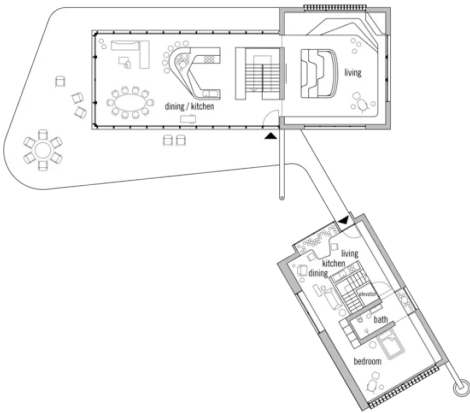
- Triple-glazed timber and aluminium windows, fitted in the factory without PU foam
- Holistic health concept with outstanding indoor air quality
- Effective Xund-E electrosmog protection and shielded electrical installations
- Superior-quality, environmentally friendly interior furnishings (incl. interior paints, floor adhesives, etc.)
- HOIZ natural, organic insulation made from wood shavings — developed in-house, certified by natureplus and IBN

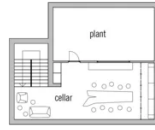
Floor plans Show house Haussicht by Alfredo Häberli

Ground Floor



First Floor





BAUFRITZ®
WIR BAUEN GESUNDHEIT

Baufritz (UK) Limited

Camboro Business Park · The Workplace · Oakington Road, Girton · Cambridge CB3 0QH
Telephone +44 (0) 1223 235632 · E-Mail: enquiries@baufritz.co.uk · Web: www.baufritz.co.uk