

Fact sheet

Show house Alpenchic



House size

Dimensions	12.43 x 8.83 m
Living area ground floor	99 m ²
Living area second floor	75 m ²
Total living area	174 m ²

Façade

Traditional silver fir shingle façade

Roof

Pitched roof

Heating and ventilation

- Combination of several energy sources (photovoltaic system, wind turbine, hydrogen fuel cell)
- Hydrogen fuel cell heating system
- Self-generated power to produce hot water
- Home automation system (EnOcean)
- Underfloor heating
- Mechanical Ventilation with Heat Recovery
- Electric car charger

Architecture and special features

- Individually designed house with advanced energy solutions: combination of several energy sources, nearing self-sufficient lifestyle, latest home automation technology
- Compact recycled concrete basement with Samba stairs

Standard specification

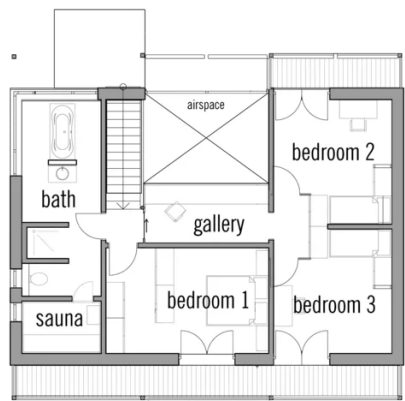
- Triple-glazed timber and aluminium windows, fitted in the factory without PU foam
- Holistic health concept with outstanding indoor air quality
- Effective Xund-E electrosmog protection and shielded electrical installations
- Superior-quality, environmentally friendly interiors that are healthy to live in thanks to innovative solutions developed in-house by Baufritz (e.g. interior paints, floor adhesives, etc.)
- HOIZ natural, organic insulation made from wood shavings — developed in-house, certified by natureplus and IBN

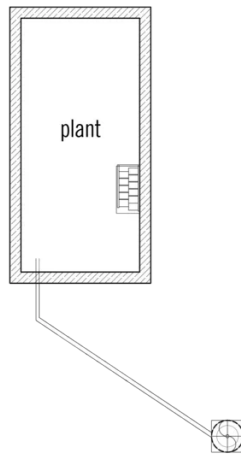
Floor plans Show house Alpenchic

Ground Floor



First Floor





BAUFRITZ®

Baufritz (UK) Limited

Camboro Business Park · The Workplace · Oakington Road, Girton · Cambridge CB3 0QH
Telephone +44 (0) 1223 235632 · E-Mail: enquiries@baufritz.co.uk · Web: www.baufritz.co.uk