

# Fact sheet

## Pawliczec



### House size

Dimensions	15.08 x 9.45 m
Living area basement	69 m <sup>2</sup>
Living area ground floor	118 m <sup>2</sup>
Living area first floor	106 m <sup>2</sup>
Total living area	293 m <sup>2</sup>

### Façade

Timber cladding "Rondo" in matte black in combination with Corten steel

### Roof

Flat roof

### Heating and ventilation

- Photovoltaic system
- Heat pump
- Wood burner
- In-wall heating system
- Mechanical Ventilation with Heat Recovery

### Architecture and special features

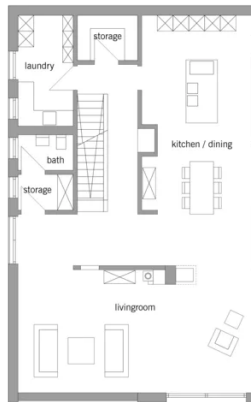
- Innovative protection layer against electrosmog and shielded cables
- 2 coats of patented Baufritz eco paint
- Generous glass frontage with breathtaking views
- Practical service lift
- Vertical photovoltaic system integrated into southern façade
- Skilfully positioned windows in living area and bathrooms

### Standard specification

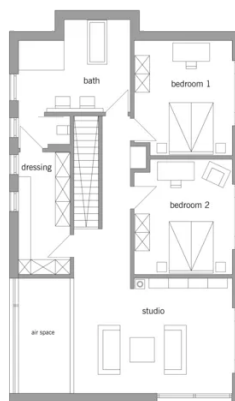
- Triple-glazed timber and aluminium windows, fitted in the factory without PU foam
- Holistic health concept with outstanding indoor air quality
- Effective Xund-E electrosmog protection and shielded electrical installations
- Superior-quality, environmentally friendly interiors that are healthy to live in thanks to innovative solutions developed in-house by Baufritz (e.g. interior paints, floor adhesives, etc.)
- HOIZ natural, organic insulation made from wood shavings — developed in-house, certified by natureplus and IBN

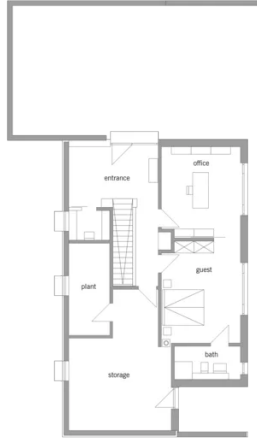
# Floor plans Pawliczec

Ground Floor



First Floor





# BAUFRITZ®

Baufritz (UK) Limited

Camboro Business Park · The Workplace · Oakington Road, Girton · Cambridge CB3 0QH  
Telephone +44 (0) 1223 235632 · E-Mail: [enquiries@baufritz.co.uk](mailto:enquiries@baufritz.co.uk) · Web: [www.baufritz.co.uk](http://www.baufritz.co.uk)