

Fact sheet

Mackintosh



House size

Dimensions	Main wing: 8.20 x 24.45
	West wing: 7.60 x 18.20 m
Living area ground floor	260 m ²
Living area second floor	181 m ²
Total living area	441 m ²

Façade

Brick combined with Porcelanosa ceramic tiles, broken up by elements with a wave-like design

Roof

Flat roof

Heating and ventilation

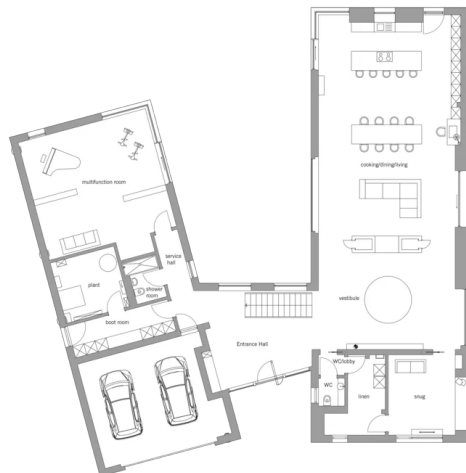
- Air source heat pump
- Underfloor heating
- Mechanical Ventilation with Heat Recovery

Standard specification

- Triple-glazed timber and aluminium windows, fitted in the factory without PU foam
- Holistic health concept with outstanding indoor air quality
- Effective Xund-E electrosmog protection and shielded electrical installations
- Superior-quality, environmentally friendly interiors that are healthy to live in thanks to innovative solutions developed in-house by Baufritz (e.g. interior paints, floor adhesives, etc.)
- HOIZ natural, organic insulation made from wood shavings — developed in-house, certified by natureplus and IBN

Floor plans Mackintosh

Ground Floor



First Floor



BAUFRITZ®

Baufritz (UK) Limited

Camboro Business Park · The Workplace · Oakington Road, Girton · Cambridge CB3 0QH
Telephone +44 (0) 1223 235632 · E-Mail: enquiries@baufritz.co.uk · Web: www.baufritz.co.uk