

# Fact sheet

## Lunn



### House size

Dimensions	1248 x 6,33 each wing m
Living area ground floor	129 m <sup>2</sup>
Living area first floor	109 m <sup>2</sup>
Total living area	238 m <sup>2</sup>

### Façade

Timber cladding "Scala" in silver grey\*, treated with a translucent light mineral based coating

### Roof

- Pitched roof, 36,54°

### Heating and ventilation

- Air source heat pump
- Underfloor heating
- Mechanical ventilation system with heat recovery

### Architecture and special features

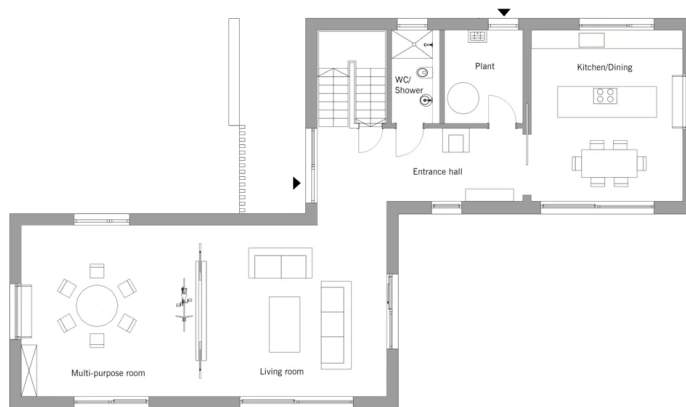
- Contemporary family home in barn style
- Designed as two distinct, interconnected volumes to minimise visual impact
- Brises soleil and carefully positioned windows give shape and definition to the façade
- Open plan interiors with flowing transitions and long vistas
- A large, fixed frame window in the master bedroom overlooking the dining area
- Double-height ceiling on the ground floor creates a feeling of space with an interplay of light

### Standard specification

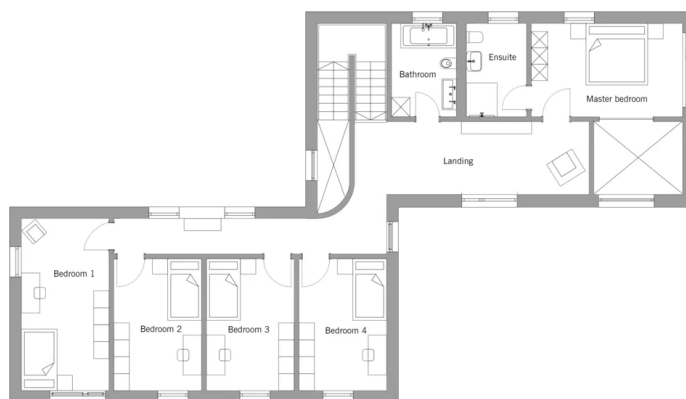
- Triple-glazed timber and aluminium windows, fitted in the factory without PU foam
- Holistic health concept with outstanding indoor air quality
- Effective Xund-E electrosmog protection and shielded electrical installations
- Superior-quality, environmentally friendly interiors that are healthy to live in thanks to innovative solutions developed in-house by Baufritz (e.g. interior paints, floor adhesives, etc.)
- HOIZ natural, organic insulation made from wood shavings — developed in-house, certified by natureplus and IBN

# Floor plans Lunn

Ground Floor



First Floor



# BAUFRITZ®