

Fact sheet

Long



House size

Dimensions	22.89 x 12.84 m
Living area ground floor	215 m ²
Living area first floor	160 m ²
Living area second floor	90 m ²
Total living area	465 m ²

Façade

Timber and render

Roof

Flat roof

Heating and ventilation

- Air source heat pump
- Mechanical ventilation with heat exchange

Architecture and special features

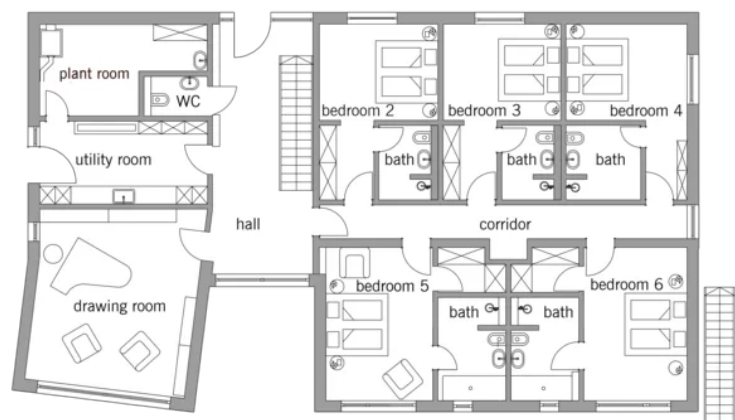
- Grey mineral render and timber façade
- Inverted floorplan with master suite on the upper floor
- Staircase with running timber slats and a skylight above
- First-floor terrace across the entire width of the house
- Expansive glazing and roof lights allow light into the interior
- Intimate spaces with a muted colour palette

Standard specification

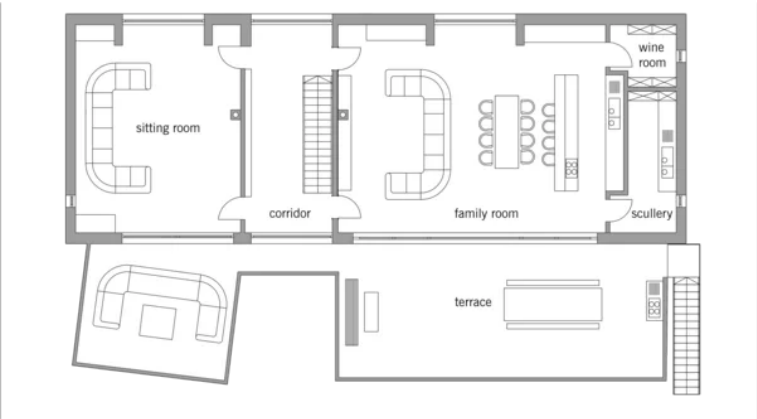
- Triple-glazed timber and aluminium windows, fitted in the factory without PU foam
- Holistic health concept with outstanding indoor air quality
- Effective Xund-E electrosmog protection and shielded electrical installations
- Superior-quality, environmentally friendly interiors that are healthy to live in thanks to innovative solutions developed in-house by Baufritz (e.g. interior paints, floor adhesives, etc.)
- HOIZ natural, organic insulation made from wood shavings — developed in-house, certified by natureplus and IBN

Floor plans Long

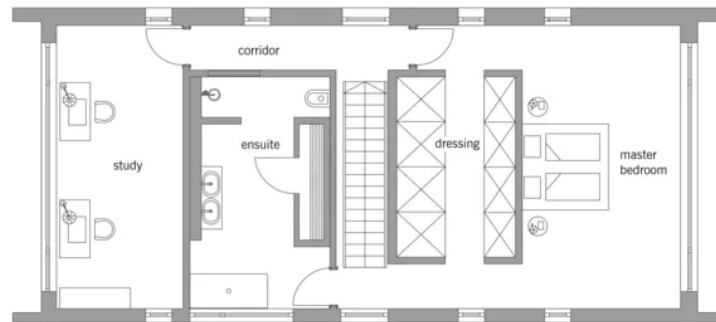
Ground Floor



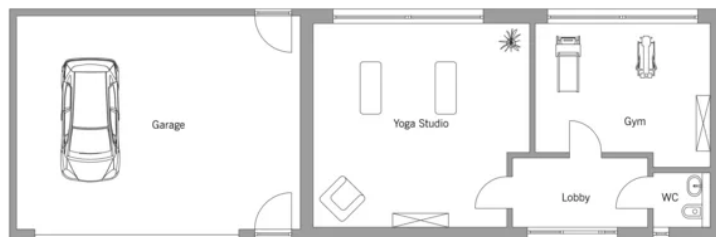
First Floor



Second Floor



Garage



BAUFRITZ®
WIR BAUEN GESUNDHEIT

Baufritz (UK) Limited

Camboro Business Park · The Workplace · Oakington Road, Girton · Cambridge CB3 0QH
Telephone +44 (0) 1223 235632 · E-Mail: enquiries@baufritz.co.uk · Web: www.baufritz.co.uk