

Fact sheet

Liming



House size

Dimensions	16.95 x 13.82 m
Living area basement	74 m ²
Living area ground floor	180 m ²
Living area first floor	164 m ²
Total living area	418 m ²

Façade

Mineral render

Roof

Flat roof

Heating and ventilation

- Air source heat pump
- Mechanical Ventilation with Heat Recovery, Underfloor heating

Architecture and special features

- Bauhaus architecture with elegant geometric forms, three storeys with two children's bedrooms, each with en-suite bath
- Seamless transitions between outside and inside. Covered terraces directly connected to the living space

Standard specification

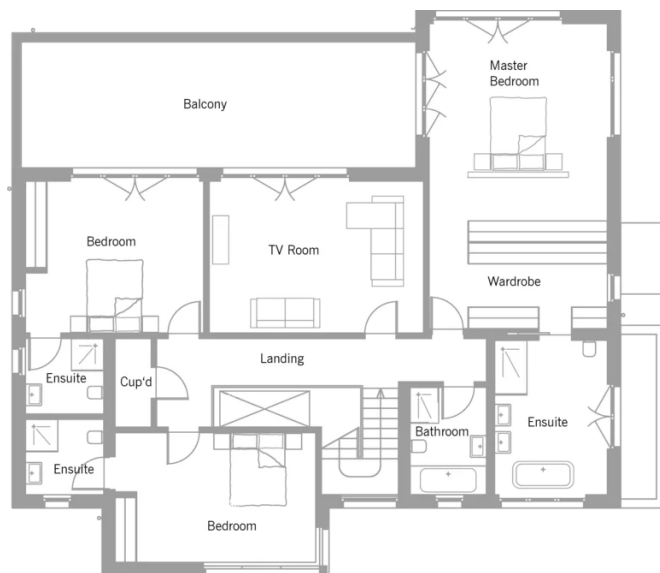
- Triple-glazed timber and aluminium windows, fitted in the factory without PU foam
- Holistic health concept with outstanding indoor air quality
- Effective Xund-E electrosmog protection and shielded electrical installations
- Superior-quality, environmentally friendly interiors that are healthy to live in thanks to innovative solutions developed in-house by Baufritz (e.g. interior paints, floor adhesives, etc.)
- HOIZ natural, organic insulation made from wood shavings — developed in-house, certified by natureplus and IBN

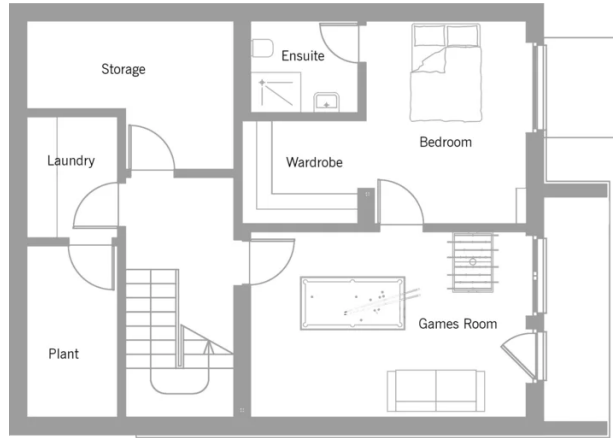
Floor plans Liming

Ground Floor



First Floor





BAUFRITZ®

Baufritz (UK) Limited

Camboro Business Park · The Workplace · Oakington Road, Girton · Cambridge CB3 0QH
Telephone +44 (0) 1223 235632 · E-Mail: enquiries@baufritz.co.uk · Web: www.baufritz.co.uk