

# Fact sheet

## Imagine



### House size

Dimensions	13.16 x 9.41 m
Living area basement	139 m <sup>2</sup>
Living area ground floor	125 m <sup>2</sup>
Living area first floor	110 m <sup>2</sup>
Living area second floor	95 m <sup>2</sup>
Total living area	469 m <sup>2</sup>

### Façade

White mineral render in combination with grey façade panels

### Roof

Crown roof

### Heating and ventilation

- Mechanical Ventilation with Heat Recovery
- Gas boiler
- Solar panels

### Architecture and special features

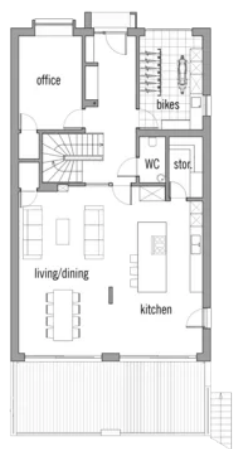
- Modernist inspired garden-facing façade with cascading cube-like structures
- Bespoke sheltered front porch
- Concealed wood beam ceiling
- Billiard room, home cinema and utility room in basement

### Standard specification

- Triple-glazed timber and aluminium windows, fitted in the factory without PU foam
- Holistic health concept with outstanding indoor air quality
- Effective Xund-E electrosmog protection and shielded electrical installations
- Superior-quality, environmentally friendly interiors that are healthy to live in thanks to innovative solutions developed in-house by Baufritz (e.g. interior paints, floor adhesives, etc.)
- HOIZ natural, organic insulation made from wood shavings — developed in-house, certified by natureplus and IBN

Floor plans Imagine

Ground Floor



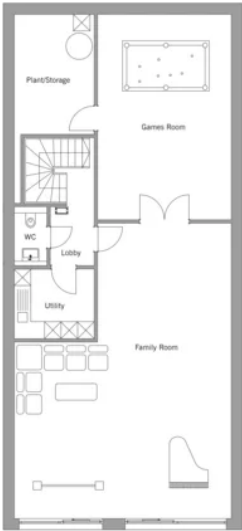
First Floor



Attic



Basement



**BAUFRITZ®**