

# Fact sheet

## Graylings



### House size

|                          |                    |
|--------------------------|--------------------|
| Dimensions               | 21.99 x 13.20 m    |
| Living area ground floor | 162 m <sup>2</sup> |
| Living area second floor | 90 m <sup>2</sup>  |
| Total living area        | 252 m <sup>2</sup> |

### Façade

Timber

### Roof

Pitched roof

### Heating and ventilation

- Underfloor heating
- Gas boiler
- Photovoltaic panels
- Gas burner
- Mechanical ventilation with heat exchange

### Architecture and special features

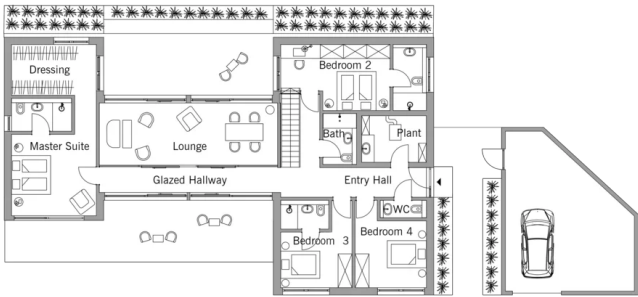
- Contemporary home with outstanding views over the Surrey Hills
- Designed “upside down” with bedrooms below and an open living area above
- Three interlinking volumes forming an “H” shape
- House and garden inspired by Japanese culture
- Ideal for family get-togethers
- Living roof and green spaces to foster biodiversity

### Standard specification

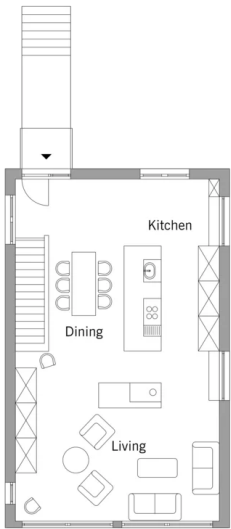
- Triple-glazed timber and aluminium windows, fitted in the factory without PU foam
- Holistic health concept with outstanding indoor air quality
- Effective Xund-E electrosmog protection and shielded electrical installations
- Superior-quality, environmentally friendly interiors that are healthy to live in thanks to innovative solutions developed in-house by Baufritz (e.g. interior paints, floor adhesives, etc.)
- HOIZ natural, organic insulation made from wood shavings — developed in-house, certified by natureplus and IBN

Floor plans Graylings

Ground Floor



First Floor



**BAUFRITZ®**