

# Fact sheet

## Clifton



### House size

Dimensions	22.51 x 9.34 m
Living area basement	131 m <sup>2</sup>
Living area ground floor	135 m <sup>2</sup>
Living area first floor	126 m <sup>2</sup>
Total living area	392 m <sup>2</sup>

### Façade

Timber cladding "Rondo" in natural finish in combination with white mineral render

### Roof

Mono pitch roof and flat roof

### Heating and ventilation

- Air source heat pump
- Hot water cylinder
- Underfloor heating
- Mechanical Ventilation with Heat Recovery

### Architecture and special features

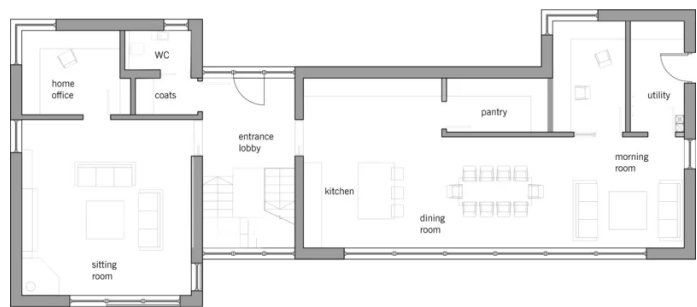
- Corner windows flood interiors with natural light
- Continuous balcony with glass balustrades allow uninterrupted sight lines
- Generous infinity pool with hot tub and comfortable deck chairs
- Dark U-shaped staircase with glass balustrade
- Floor-to-ceiling windows offer views of beautiful landscaped gardens

### Standard specification

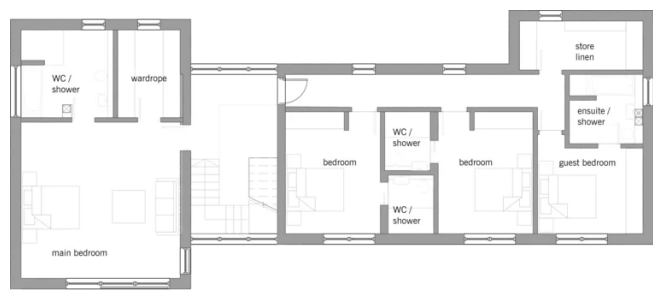
- Triple-glazed timber and aluminium windows, fitted in the factory without PU foam
- Holistic health concept with outstanding indoor air quality
- Effective Xund-E electrosmog protection and shielded electrical installations
- Superior-quality, environmentally friendly interiors that are healthy to live in thanks to innovative solutions developed in-house by Baufritz (e.g. interior paints, floor adhesives, etc.)
- HOIZ natural, organic insulation made from wood shavings — developed in-house, certified by natureplus and IBN

Floor plans Clifton

Ground Floor



First Floor





**BAUFRITZ®**  
WIR BAUEN GESUNDHEIT

Baufritz (UK) Limited

Camboro Business Park · The Workplace · Oakington Road, Girton · Cambridge CB3 0QH  
Telephone +44 (0) 1223 235632 · E-Mail: [enquiries@baufritz.co.uk](mailto:enquiries@baufritz.co.uk) · Web: [www.baufritz.co.uk](http://www.baufritz.co.uk)