

Fact sheet

Classic M



House size

Dimensions	11.35 x 11.35 m
Living area basement	37 m ²
Living area ground floor	102 m ²
Living area first floor	91 m ²
Living area second floor	42 m ²
Total living area	272 m ²

Façade

Render

Roof

Crown roof

Architecture and special features

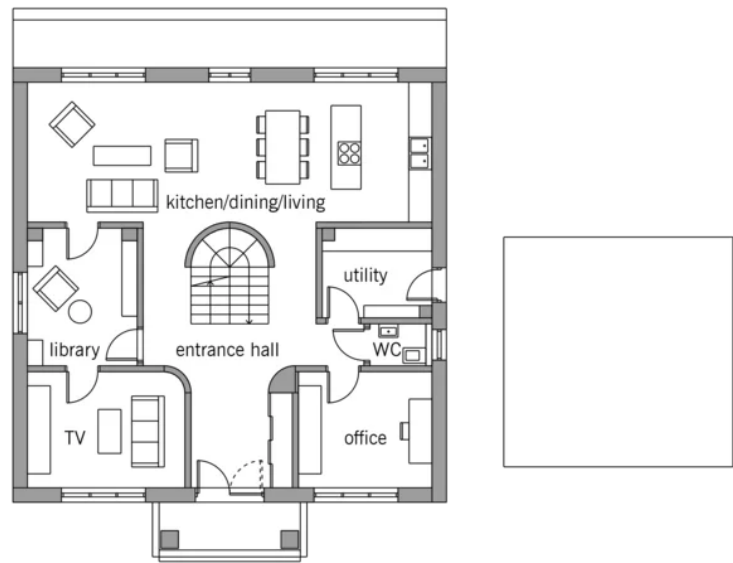
- Palladian-style house with a focus on symmetry and balanced proportions
- Comfortable, two-storey family home with four bedrooms
- Choice of roof surfaces and interior furnishings
- Option of cornices and pilaster strips on the façade
- Buildings services with A+ rating and the option of solar panels
- Double garage

Standard specification

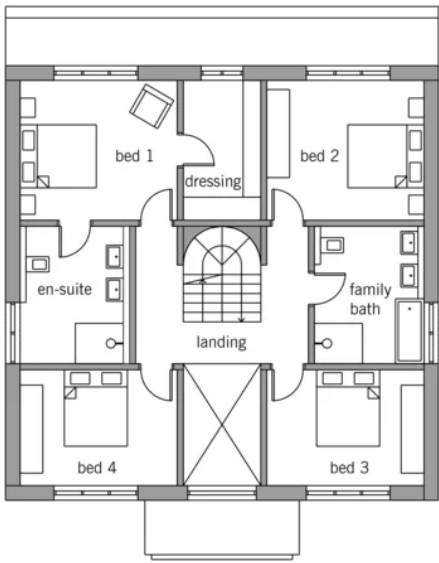
- Triple-glazed timber and aluminium windows, fitted in the factory without PU foam
- Holistic health concept with outstanding indoor air quality
- Effective Xund-E electrosmog protection and shielded electrical installations
- Superior-quality, environmentally friendly interiors that are healthy to live in thanks to innovative solutions developed in-house by Baufritz (e.g. interior paints, floor adhesives, etc.)
- HOIZ natural, organic insulation made from wood shavings — developed in-house, certified by natureplus and IBN

Floor plans Classic M

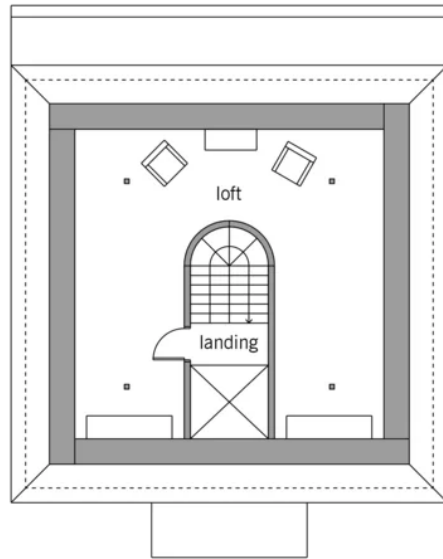
Ground Floor



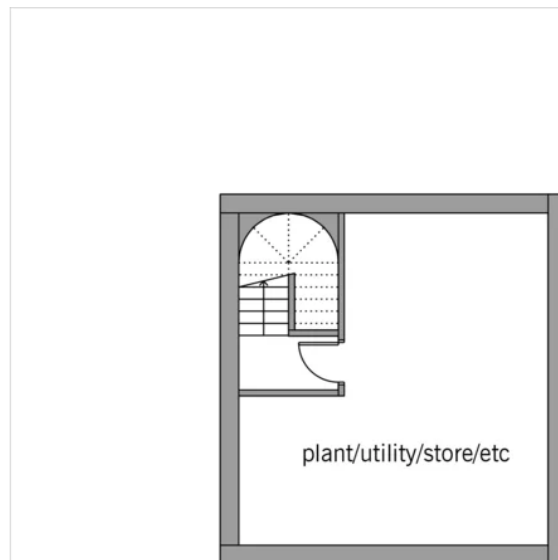
First Floor

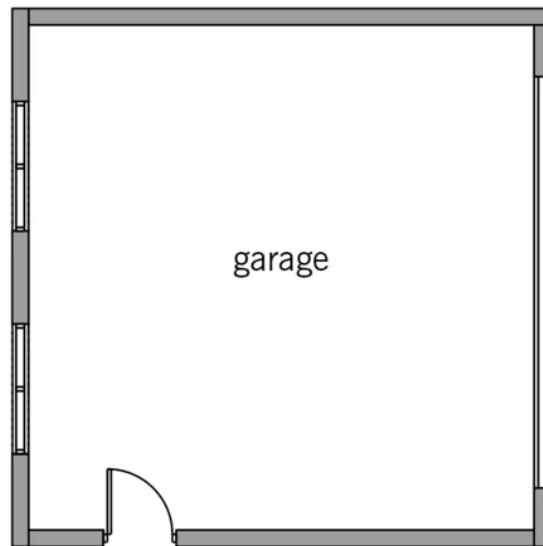


Attic



Basement





BAUFRITZ®

Baufritz (UK) Limited

Camboro Business Park · The Workplace · Oakington Road, Girton · Cambridge CB3 0QH
Telephone +44 (0) 1223 235632 · E-Mail: enquiries@baufritz.co.uk · Web: www.baufritz.co.uk