

# Fact sheet

## Brunt



### House size

Dimensions	19.45 x 15.17 m
Living area ground floor	173 m <sup>2</sup>
Living area first floor	139 m <sup>2</sup>
Total living area	312 m <sup>2</sup>

### Façade

Timber, mineral render, Kentish ragstone

### Roof

Pitched roof, monopitched roof and a lean-to roof

### Heating and ventilation

- Underfloor heating
- Air source heat pump
- Photovoltaic panels linked to a Tesla Power Wall battery
- Decentralised mechanical ventilation

### Architecture and special features

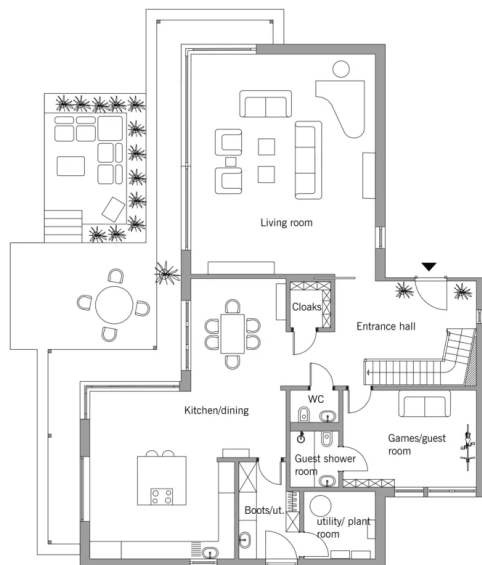
- Contemporary family home with views over the Weald of Kent
- Three linked volumes breaking down the mass of the building
- Use of local materials that are sympathetic to the site
- Free-flowing interiors with comfortable hotel-style bedrooms on first floor
- PV installation generating most of the electricity needed to run the house
- Future-proof design with wheelchair-accessible bedroom on the ground floor

### Standard specification

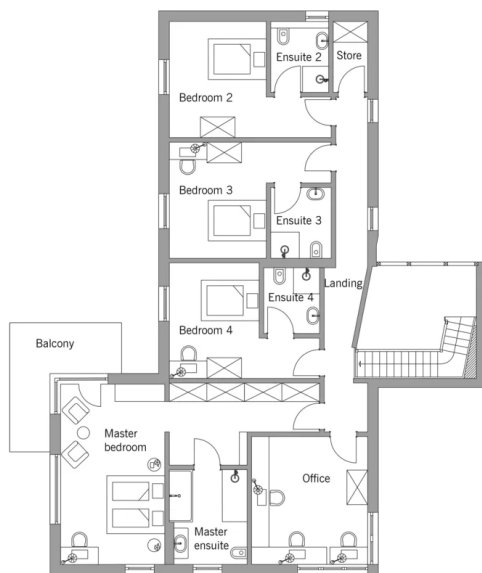
- Triple-glazed timber and aluminium windows, fitted in the factory without PU foam
- Holistic health concept with outstanding indoor air quality
- Effective Xund-E electrosmog protection and shielded electrical installations
- Superior-quality, environmentally friendly interiors that are healthy to live in thanks to innovative solutions developed in-house by Baufritz (e.g. interior paints, floor adhesives, etc.)
- HOIZ natural, organic insulation made from wood shavings — developed in-house, certified by natureplus and IBN

# Floor plans Brunt

Ground Floor



First Floor



# BAUFRITZ®

Baufritz (UK) Limited

Camboro Business Park · The Workplace · Oakington Road, Girton · Cambridge CB3 0QH  
Telephone +44 (0) 1223 235632 · E-Mail: enquiries@baufritz.co.uk · Web: www.baufritz.co.uk