

Fact sheet

Barn M



House size

Dimensions	8.20 x 21.33 m
Living area ground floor	150 m ²
Living area first floor	142 m ²
Total living area	292 m ²

Façade

Timber

Roof

Pitched roof

Architecture and special features

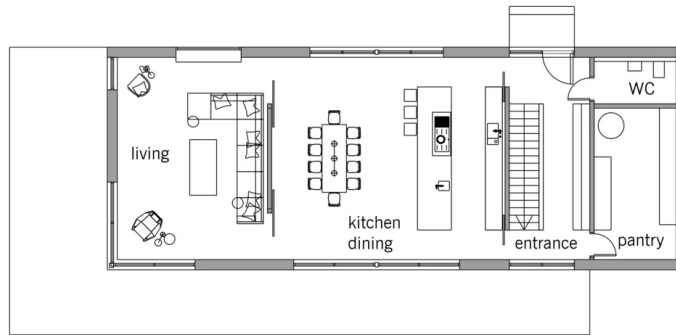
- Contemporary, two-storey family home in a barn-style design
- Four bedrooms, three with en-suite bathrooms and dressing rooms
- Choice of colours for cladding the façade and roof
- Wide choice of interior furnishings
- Skylight with fixed glazing and solar shades
- Buildings services with A+ rating and the option of solar panels

Standard specification

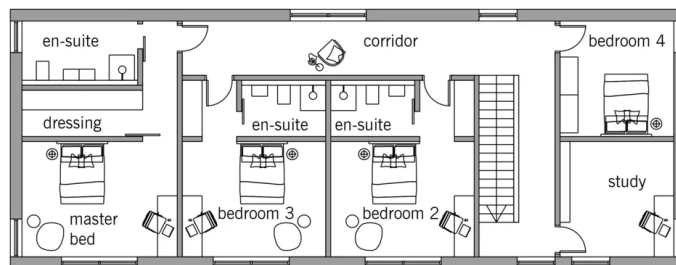
- Triple-glazed timber and aluminium windows, fitted in the factory without PU foam
- Holistic health concept with outstanding indoor air quality
- Effective Xund-E electrosmog protection and shielded electrical installations
- Superior-quality, environmentally friendly interiors that are healthy to live in thanks to innovative solutions developed in-house by Baufritz (e.g. interior paints, floor adhesives, etc.)
- HOIZ natural, organic insulation made from wood shavings — developed in-house, certified by natureplus and IBN

Floor plans Barn M

Ground Floor



First Floor



BAUFRITZ®

Baufritz (UK) Limited

Camboro Business Park · The Workplace · Oakington Road, Girton · Cambridge CB3 0QH
Telephone +44 (0) 1223 235632 · E-Mail: enquiries@baufritz.co.uk · Web: www.baufritz.co.uk