

# Fact sheet

## Barn L Compact



### House size

Dimensions	Wing one: 7.06 x
	20.00
	Wing two: 7.06 x
	17.68 m
Living area ground floor	228 m <sup>2</sup>
Living area first floor	47 m <sup>2</sup>
Total living area	275 m <sup>2</sup>

### Façade

Timber

### Roof

Pitched roof

### Architecture and special features

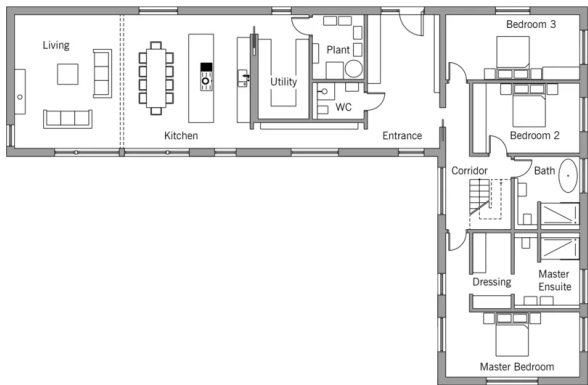
- Compact, more cost-efficient addition to the Barn Collection
- Contemporary design blends with traditional craftsmanship
- Four bedrooms, two with ensuite bathrooms
- A 25 sqm loft extension with a storage unit accessible via a hatch with a pull-down ladder
- Conforms with passive house standards

### Standard specification

- Triple-glazed timber and aluminium windows, fitted in the factory without PU foam
- Holistic health concept with outstanding indoor air quality
- Effective Xund-E electrosmog protection and shielded electrical installations
- Superior-quality, environmentally friendly interiors that are healthy to live in thanks to innovative solutions developed in-house by Baufritz (e.g. interior paints, floor adhesives, etc.)
- HOIZ natural, organic insulation made from wood shavings — developed in-house, certified by natureplus and IBN

Floor plans Barn L Compact

Ground Floor



First Floor

