

Fact sheet

Adler



House size

Dimensions	19.40 x 10.70 m
Living area ground floor	137.2 m ²
Living area first floor	115.65 m ²
Total living area	252.85 m ²

Façade

Timber and render

Roof

Pitched roof

Heating and ventilation

- Underfloor heating
- Air source heat pump
- Decentralised mechanical ventilation with heat recovery

Architecture and special features

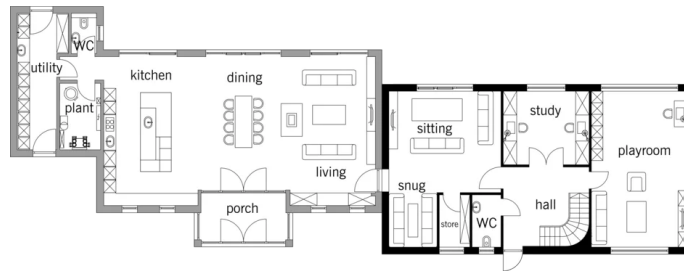
- Flagship project for a new market segment in the UK
- Three interconnected volumes define this contemporary barn-style home
- Bespoke extension with open-plan space for entertaining
- Existing house was refurbished using Baufritz materials
- Striking double-height feature fireplace as room divider
- Muted colours and natural timber details for an elegant touch

Standard specification

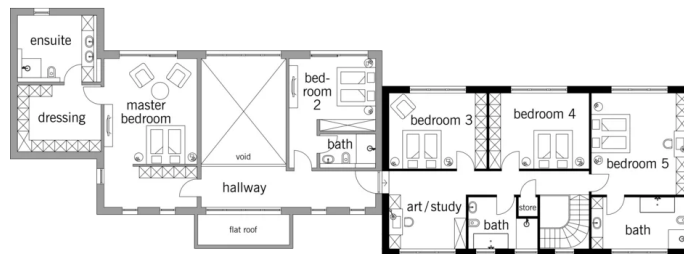
- Triple-glazed timber and aluminium windows, fitted in the factory without PU foam
- Holistic health concept with outstanding indoor air quality
- Effective Xund-E electrosmog protection and shielded electrical installations
- Superior-quality, environmentally friendly interiors that are healthy to live in thanks to innovative solutions developed in-house by Baufritz (e.g. interior paints, floor adhesives, etc.)
- HOIZ natural, organic insulation made from wood shavings — developed in-house, certified by natureplus and IBN

Floor plans Adler

Ground Floor



First Floor



BAUFRITZ®

Baufritz (UK) Limited

Camboro Business Park · The Workplace · Oakington Road, Girton · Cambridge CB3 0QH
Telephone +44 (0) 1223 235632 · E-Mail: enquiries@baufritz.co.uk · Web: www.baufritz.co.uk