

# Fact sheet

## Joydon



### House size

Dimensions	11.91 x 14.41 m
Living area basement	117 m <sup>2</sup>
Living area ground floor	136 m <sup>2</sup>
Living area second floor	140 m <sup>2</sup>
Total living area	393 m <sup>2</sup>

### Façade

Mineral render

### Roof

Pitched roof, 22.5°, flat roof

### Heating and ventilation

- Mechanical ventilation with heat recovery
- Underfloor heating
- Gas boiler
- Photovoltaic panels

### Architecture and special features

- Modern, three-story detached family home
- Spacious double height entrance hall
- Wellness oasis with organic sauna and steam bath
- Elegant staircase with integrated lighting
- Floor-to-ceiling triple glazed windows
- Integrated double garage

### Standard specification

- Triple-glazed timber and aluminium windows, fitted in the factory without PU foam
- Holistic health concept with outstanding indoor air quality
- Effective Xund-E electrosmog protection and shielded electrical installations
- Superior-quality, environmentally friendly interior furnishings (incl. interior paints, floor adhesives, etc.)
- HOIZ natural, organic insulation made from wood shavings — developed in-house, certified by natureplus and IBN



**BAUFRITZ®**  
WIR BAUEN GESUNDHEIT

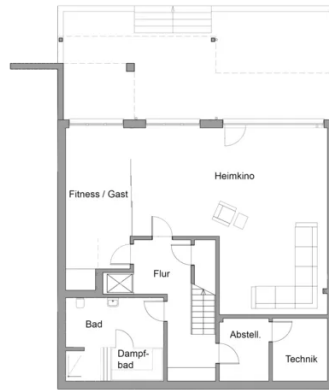
Floor plans Joydon

Ground Floor



First Floor





**BAUFRITZ®**  
WIR BAUEN GESUNDHEIT

Baufritz (UK) Limited

Camboro Business Park · The Workplace · Oakington Road, Girton · Cambridge CB3 0QH  
Telephone +44 (0) 1223 235632 · E-Mail: [enquiries@baufritz.co.uk](mailto:enquiries@baufritz.co.uk) · Web: [www.baufritz.co.uk](http://www.baufritz.co.uk)