

# Fact sheet

## Barn L



### House size

Dimensions	29.45 x 19.45 m
Living area ground floor	270 m <sup>2</sup>
Living area first floor	71 m <sup>2</sup>
Total living area	341 m <sup>2</sup>

### Façade

Timber

### Roof

Pitched roof

### Architecture and special features

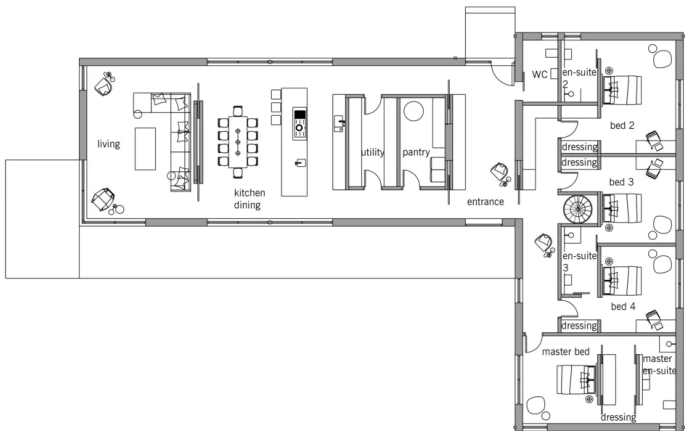
- Single-storey L-shaped family home in a barn-style design
- Four bedrooms, two en-suite and two with a shared bathroom
- Choice of natural stone and timber cladding
- Wide choice of interior furnishings
- Skylight with fixed glazing and solar shades
- Buildings services with A+ rating and the option of solar panels

### Standard specification

- Triple-glazed timber and aluminium windows, fitted in the factory without PU foam
- Holistic health concept with outstanding indoor air quality
- Effective Xund-E electrosmog protection and shielded electrical installations
- Superior-quality, environmentally friendly interior furnishings (incl. interior paints, floor adhesives, etc.)
- HOIZ natural, organic insulation made from wood shavings — developed in-house, certified by natureplus and IBN

Floor plans Barn L

Ground Floor



First Floor

